



OAK STABLES



Travel along the peaceful Pocket Nook Road, a scenic country village route in Chew Moor, to discover this contemporary, custom-built architect-designed residence, crafted to cater to the demands of modern family living.

Formerly a milking barn, the site has been recently transformed into an expansive 6500 square foot home, now known as the striking Oak Stables, proudly standing amidst the hamlet of converted farm buildings.

Upon arrival, park conveniently on the tarmacked driveway, providing ample space for multiple cars before the double integral garage.

The front façade exudes sophistication, with uplighting accentuating the blend of rustic brick and modern glass.

LOOKING FOR A LUXURY
MODERN NEW BUILD
DETACHED FAMILY HOME
IN CHEW MOOR?







Beyond the anthracite contemporary front door and frosted panelling, step into a light-filled entrance hall.

The arched glazed barn window spanning up to the second floor, alongside the glass galleried staircase and landing, bathes the entrance hall in natural light.

Contemporary spotlighting traces the ceiling's edge, ensuring a bright and welcoming atmosphere at any time of day.

Large underfloor heated porcelain tiles, subtly decorated, extend seamlessly throughout the ground floor.







FAMILY HAVEN

Glide through the expansive opening into a spacious family living room, adorned with two frosted glass panels resting upon white pebbles and illuminated on either side of the entrance.

This inviting family lounge centres around a double-sided woodburner stove, providing a glimpse through to the adjoining living/kitchen diner. Integrated into one side of the chimney breast is a tall rectangular log store and a TV point, accentuated by textured glitter wallpaper flanking either side.

Overhead, a recessed tray ceiling adds definition to the space with the help of creative lighting. A generously sized sliding aluminium and glass door leads to the rear garden, offering captivating open views across neighbouring farmland and towards Winter Hill.





SOCIAL SANCTUARY

Returning to the hallway, proceed past the textured slate wall and the glazed balustrade leading to the lower ground floor.

Ascend a step into a vibrant, high-specification family kitchen/dining/lounge/playroom. This space, the epitome of contemporary chic, serves as the true focal point of the home—a light and airy vaulted area meticulously designed for entertaining.

The kitchen itself is ensconced in a blend of black matte and white gloss cabinetry, with a strikingly long island unit seamlessly transitioning into a built-in dining table featuring booth seating in vibrant fuchsia pink leather.

Within the breakfast bar, discover a four-burner induction hob, a sink, and a contrasting 4-seater breakfast bar with a wine chiller perfectly situated nearby. Two integrated fan-assisted ovens, a microwave, coffee machine a fridge/freezer and an integral dishwasher seamlessly integrate into the rest of the kitchen.

Open the three sets of large sliding doors to both side and rear elevations and extend the celebration to the al fresco dining area. Two generously sized paved patios, ideal for entertaining or a leisurely morning breakfast, have been meticulously crafted.





Towards the rear, an expansive outdoor kitchen area is underway, featuring a built-in barbecue area awaiting its finishing touches.

Above, the freshly plastered ceiling showcases recessed spotlighting, cabinet uplighters, and wall lighting, accentuating the expansive space.

Move beyond the sofa within the kitchen to the sitting area surrounding the double-sided fire shared with the family living room.

Sneak a glance around the corner, where the space by the front window currently serves as a combined play and study area, keeping all family activities seamlessly integrated within one room.







On the right side, discover a luxurious master bedroom suite, elegantly styled in white with soft grey carpeting and a captivating floral pink wallcovering behind the bed.

Bathed in natural light from the vaulted ceiling, Velux window, and large window, this inviting room serves as an ideal haven for a peaceful night's rest.

BEDROOM BLISS

Back in the hall, ascend the feature oak staircase as it winds up to the spacious galleried first floor landing. Above head, a large feature pendant fitting sits perfectly in place to emphasise the height.





Recessed lighting along the edges further enhances the ambiance, and you'll wake up to captivating views towards Winter Hill, enjoying the privacy afforded by the one-way glass.

A walk-in wardrobe is thoughtfully fitted to offer ample space for hanging clothes and displaying accessories.

Transition into the master ensuite, featuring a back-to-wall WC, a hand wash basin with a modern wall-hung under-cabinet, and an inset mirror against a slate-tiled textured wall. Across from it, a spacious walk-in shower awaits.

Next door, also offering a serene view of the rear aspect, you'll find another expansive vaulted double bedroom. The room is designed with a refreshing aesthetic, showcasing pristine white walls that provide a versatile backdrop. Adding a playful touch, a vivid and eye-catching football wall decal becomes a focal point, injecting personality into the space. The floor is adorned with a plush blue carpet, creating a cosy and inviting atmosphere within this well-appointed bedroom.





Adjacent to this room, the third bedroom offers ample space for a complete set of bedroom furniture, alongside the option for a double or king-sized bed.

Situated at the front of the home and graced with two windows, the fourth bedroom is neutrally decorated, providing a blank canvas for you to personalise. Take a peek into its private ensuite, featuring a WC, a cream gloss vanity wash basin, and a walk-in shower with a glazed screen. The bathroom is adorned with white tiling, complemented by playful and colourful spotted and striped textures—creating a vibrant space perfect for a child's room.





Serving the bedrooms, a lavish bathroom awaits at the end of the landing. It showcases a freestanding bath, a contemporary wall-hung vanity unit with a fitted mirror above, a back-to-wall WC, and a walk-in shower complete with built-in seating and shelving. The varied tiling designs, featuring textured slate on the walls to accentuate the bath area and mosaics within the shower, add a touch of sophistication to this luxurious space.









Returning to the hallway, on the opposite side of the house, you'll find a fully equipped utility room featuring a washing machine and tumble dryer. Adjacent to the entrance hall is a conveniently located WC, addressing practical needs for visiting guests.

Continuing down the corridor, above the double garage, you'll uncover a guest annex. This private space boasts a spacious double bedroom with a front-facing window and a Velux window. The ensuite bathroom, cleverly concealed behind a wall, showcases contemporary elements such as a WC, a wall-hung vanity drawer unit in a rich dark walnut finish with a bowl sink, and a double walk-in shower tray with a glazed screen. Linear woodgrain effect tiling adorns both the floor and walls, contributing to the modern and stylish ambiance of this guest retreat.

ANNEX-TRA SPACE



STEP OUTSIDE



Step outside and explore the expansive side and rear gardens enveloping Oak Stables. Past the inviting two-tiered patio, a vast walled lawn unfolds, leading to a purpose-built storage/garden room at the rear. This dedicated outdoor space is designed to accommodate a variety of family activities, creating a versatile area for play, relaxation, and entertaining. Whether you want to enjoy a leisurely afternoon, host gatherings with friends and family, or let the kids play freely, this thoughtfully designed outdoor space offers ample room for all your outdoor pursuits.





OUT & ABOUT

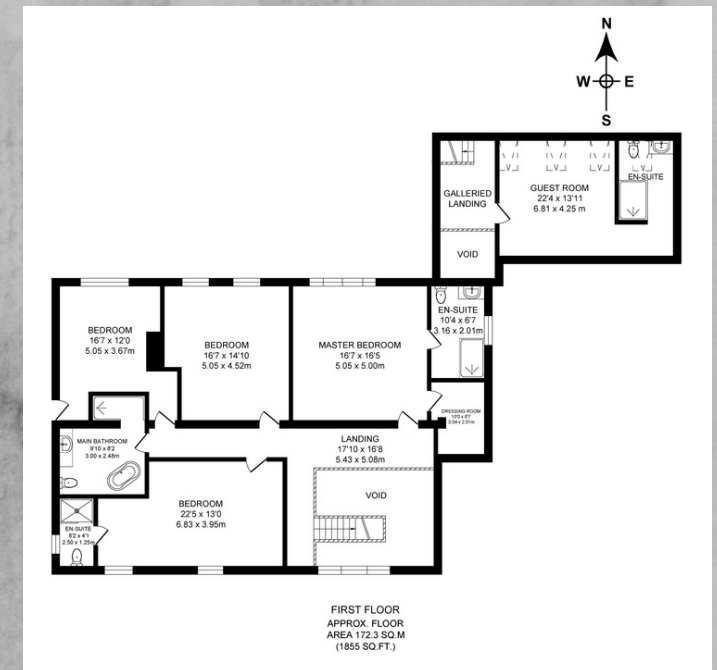
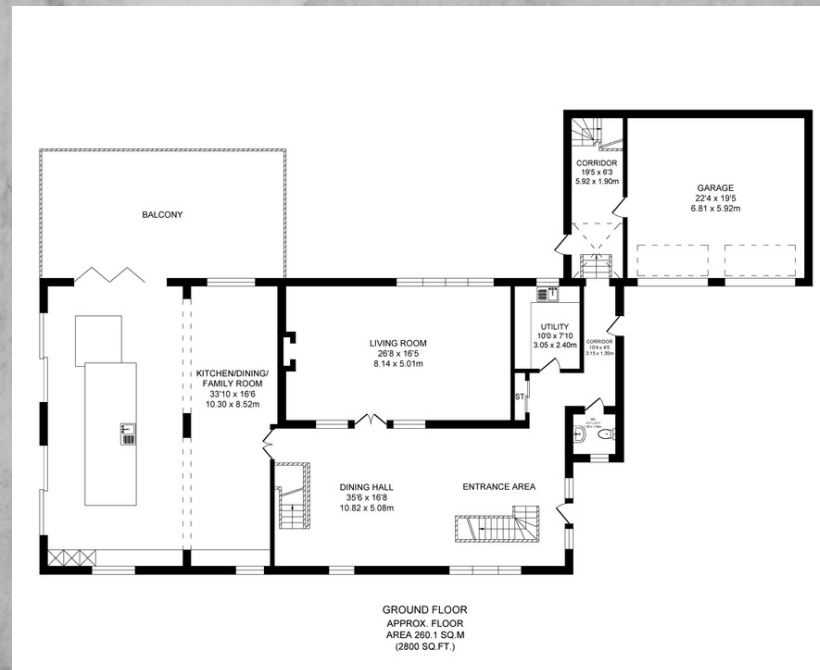
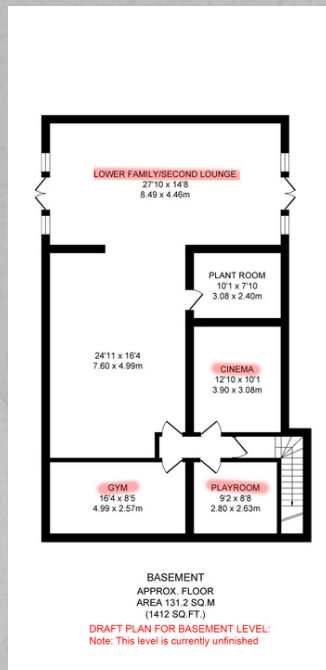
Tucked at the end of Pocket Nook Road, Oak Stables provides a tranquil haven with no through traffic, ensuring a safe space for children.

Nearby amenities include a playground, horse riding facilities, and sports clubs like Tempest United Football Club and Lostock Cricket Club.

The local village pub, Duke of Wellington, is perfect for a leisurely stroll, and Rivington and Lever Park are easily accessible.

Well-connected via the M61, the location offers convenient access to various destinations.

Top-rated schools and entertainment options like Middlebrook Retail Park and Bolton Wanderers Football Club enhance the family-friendly appeal of this stylish and spacious home.



KEY FEATURES:

- Modern New-Build Detached Family Home
- Five Spacious Double Bedrooms (Three Ensuite)
- Modern High Spec Open Plan Living/Kitchen/Diner With Large Breakfast Bar
- Large Sliding Aluminium Doors Onto Garden
- Large Side & Rear Garden
- Driveway For Several Cars & Large Double Integral Garage
- Incl. Annex/ Guest Bedroom With Ensuite Above The Garage
- Spacious 1400 sq ft Basement With Opportunity to Develop Into Cinema/ Gym/ Further Living accommodation
- Tenure: Freehold
- EPC Rated: B
- Council Tax: G



OAK STABLES
POCKET NOOK ROAD
CHEW MOOR, LOSTOCK
BOLTON, BL6 4HW

T: 01204 329975
E: INFO@NEWTONCO.CO.UK
WWW.NEWTONCO.CO.UK

NEWTON & CO
SIGNATURE HOMES



NEWTON & CO: 237A DARWEN RD, BOTLON, BL7 9BS